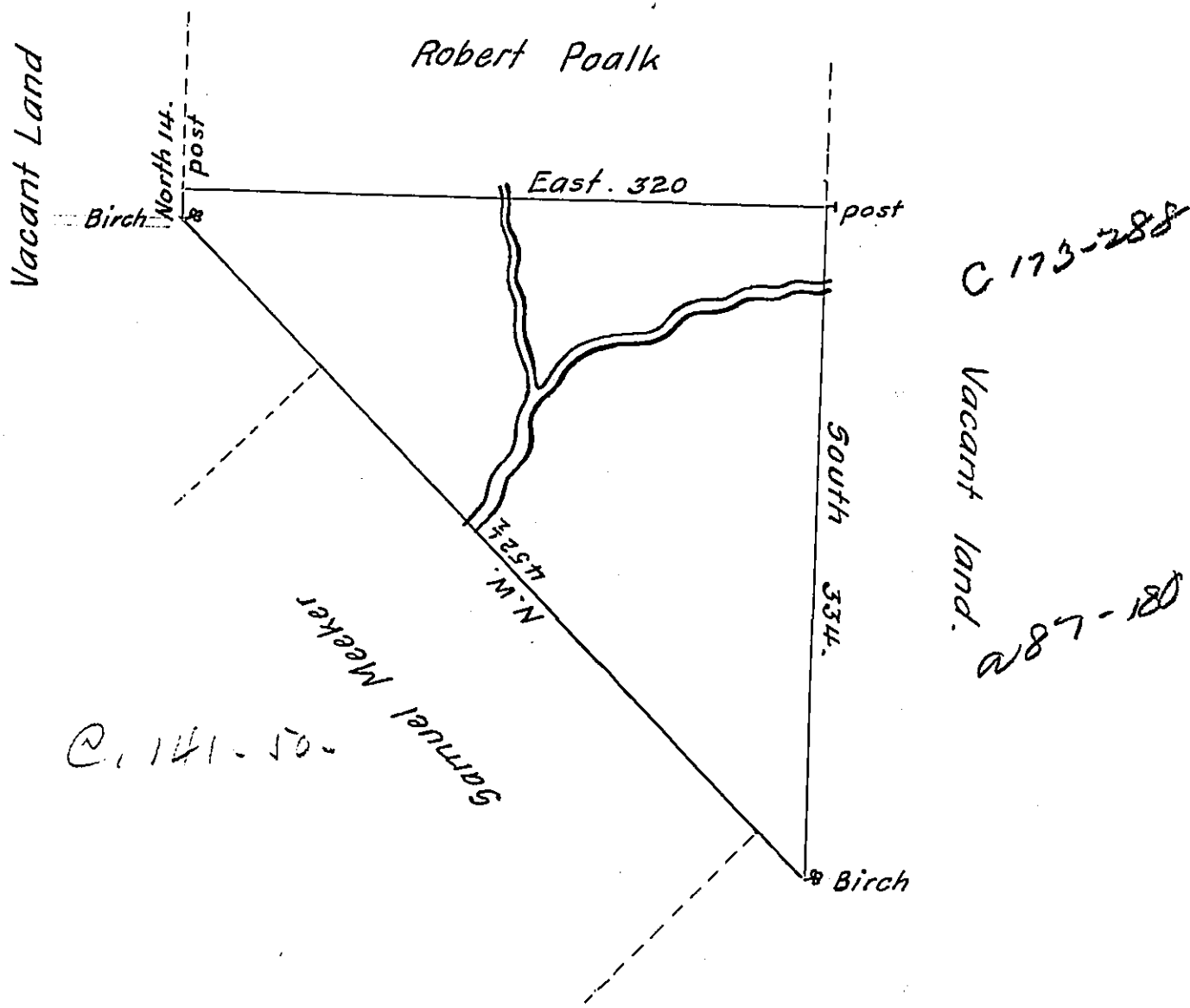


C 173-150



By Virtue of a Warrant dated the 31<sup>st</sup> May 1792 Surveyed the 19  
 June 1792 to William Shannon the above described tract of land situate  
 on Trout Creek a branch of Lehi in Northampton County Containing  
 Three hundred and twenty eight Acres forty-eight perches and the  
 Allowance of Six  $\frac{1}{2}$  Cent &c<sup>a</sup>.

Daniel Brodhead Esquire }  
 Survey<sup>r</sup>. General. }

$\frac{1}{2}$  Geo Palmer

IN TESTIMONY that the above is a copy of the original remaining on file in  
 the Department of Internal Affairs of Pennsylvania, made  
 conformably to an Act of Assembly approved the 16th day of  
 February, 1833, I have hereunto set my Hand and caused  
 the Seal of said Department to be affixed at Harrisburg,  
 this twenty-sixth day of October 190

*Isaac S. Brown*  
 Secretary of Internal Affairs.